



TP-90
TP-170
TP-250



TP-350
TP-500
TP-750



TP-950
TP-1300



TADPOLE SERIES

SUBMERSIBLE WATER PUMP

OWNER'S MANUAL



ATTENTION: NEVER OPERATE THIS PUMP OUT OF WATER
This pump requires to be submerged in freshwater only during operation.



PLEASE READ THIS MANUAL SAVE FOR FUTURE REFERENCE

THE INSTRUCTIONS AND WARNINGS HEREIN PRESUME EXISTING FAMILIARITY WITH THE DESIGN AND FUNCTION OF THESE AND SIMILAR PRODUCTS AND THEIR COMPONENTS.

The model(s) represented in this manual may have additions and/or modifications made at any time. Pictures represent a standard unit series and an actual unit may vary slightly. This manual is based on the latest product information available at the time of creation or last revision. It is believed to be generally accurate and reliable. Please consult our customer service representatives here at ANJON MANUFACTURING if detailed information is desired, or whenever there is a question about a given unit's configuration or performance specifications at **1-800-553-5605**.

TADPOLE SERIES SUBMERSIBLE WATER PUMP SPECIFICATIONS

TP SERIES Model #	Rated Voltage Hertz	Rated Watts	Rated Current Input (Amps)	Max Head Height	Max Flow (GPH)	Preferred Pipe Diameter	Cord Length
TP-90	120V 60Hz	5W	0.082A	3.1 ft	120	0.5 in.	12 ft
TP-170	120V 60Hz	11W	0.15A	4.6 ft	185	0.5 in.	12 ft
TP-250	120V 60Hz	14W	0.2A	6.0 ft	265	0.5 in.	12 ft
TP-350	120V 60Hz	25W	0.26A	6.5 ft	395	0.75 in.	20 ft
TP-500	120V 60Hz	45W	0.58A	8.5 ft	660	0.75 in.	20 ft
TP-750	120V 60Hz	70W	0.58A	10.5 ft	925	0.75 in.	20 ft
TP-950	120V 60Hz	70W	1.5A	10.0 ft	1005	1.0 in.	20 ft
TP-1300	120V 60Hz	99W	1.5A	11.0 ft	1310	1.0 in.	20 ft

TADPOLE SERIES SUBMERSIBLE WATER PUMP FLOW (GPH)

Head Height	TP-90	TP-170	TP-250	TP-350	TP-500	TP-750	TP-950	TP-1300
0 ft	120	185	265	395	660	925	1005	1310
1 ft	65	150	230	380	575	830	960	1175
2 ft	55	105	200	350	500	725	900	1025
3 ft	15	30	165	280	400	675	750	925
4 ft		15	90	200	325	600	625	800
5 ft			65	120	240	560	570	720
6 ft				30	150	500	500	600
8 ft					20	200	200	350
10 ft						25	30	125

Introduction

Congratulations on your purchase of an **Anjon Manufacturing's TP SERIES Submersible Water Pump**! Thank you for being a valued customer! We are grateful for the opportunity to provide you with superior products, such as a TP SERIES Submersible Water Pump that is manufactured to the highest standards using quality materials.



MISSING PARTS?

THERE IS NO NEED TO RETURN THIS PRODUCT TO YOUR RETAILER.

CALL US AT **1-800-553-5605**
AND WE WILL MAKE IT RIGHT!

Safety First

It is recommended that you thoroughly read and understand this manual prior to first startup and before you attempt to service the model to which **TP SERIES Submersible Water Pump** this applies. If you have any questions, we'll be happy to help. Please call us, at **1-800-553-5605**.

THE FOLLOWING PRECAUTIONS AND WARNINGS ARE FOR YOUR OWN SAFETY!



Attention: This pump is not intended for use by persons, (including children) with reduced physical sensory or mental capabilities, or lack of experience and knowledge, unless they have been given supervision or instruction concerning use of the pump by a person responsible for their safety.

This pump is designed to be submerged during operation for proper function and cooling.

- **Never** operate this pump without it being fully submerged in **freshwater only**.
- **Never** pick up pump by, remove, or put stress on the cord.
- **Never** operate this pump connected to a voltage other than that shown on the pump.
- **Never** place your hand, or any object, in or near the inlet opening while this pump is operating. If the pump inlet is clogged, **always** turn off the power first and wait until motor is completely stopped before attempting to remove any clogged material.
- **Never** operate this pump in a swimming pool or in a marina area.
- **Never** leave children unattended around this pump while operating.
- If attaching a fountain to your pump, **never** have the water spray exceed a 5foot radius in any direction from the pump to prevent the water from splashing out of your water feature.
- **Always** have this pump connected to properly grounded GFCI electrical outlet.
- **Always** disconnect from electrical supply before handling pump.

WARNING



ELECTRICAL SHOCK HAZARD

This product must be properly grounded!



Do not modify the plug provided. Only plug into GFCI electrical outlet. If you do not have a GFCI outlet, we recommend you have one properly installed by a qualified electrician!

If the cord should ever need repair or replacement, please contact Anjon Manufacturing's Customer Service Representative for further instructions on how to have your product serviced. NEVER modify the cord or plug on your product!

Be sure that your source of power is correctly wired and in proper operating condition. Never hard-wire or permanently connect this product to a power source!

Failure to follow these instructions can result in fire, serious injury from electrical shock, or even death!



Attention: Do not operate this pump under any conditions other than those it is specified. Failure to observe these precautions can result in serious injury and will void the warranty!

Remember, Correct Installation is Your Responsibility!

Make sure you have the proper installation conditions. The **TP SERIES Submersible Water Pump** needs to be protected from any objects and debris while operating. Before beginning assembly or operation of product, make sure all parts are present. If any part of your **TP SERIES Submersible Water Pump** is *missing* or *damaged*, **DO NOT attempt to assemble, install, or operate.**

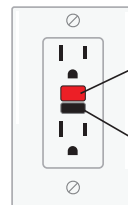
Electrical Requirements

This pump is rated at 120 Volts 60Hz and is to be supplied through a residual current device (RCD) with a rated residual operating current not exceeding 30mA. Only use a power supply rating voltage at 120 volts and 60Hz, which complies with that listed on label on the **TP SERIES Submersible Water Pump**. The cord must be plugged into a **GFCI** outlet that is properly installed and grounded in accordance with all local codes and ordinances.

A hardwired installation is **not** recommended and **will** result in the warranty being voided!

It is your responsibility to contact a qualified electrician and assure that the electrical installation is adequate and in conformance with all national and local codes and ordinances. Make sure this pump is securely installed before any operation.

EXAMPLE OF A GFCI OUTLET (GROUNDED FAULT CIRCUIT INTERRUPT)

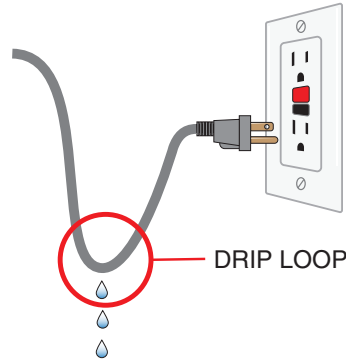


RESET BUTTON

TEST BUTTON

Operation

- Do not operate the **TP SERIES Submersible Water Pump** in water above 95°F for proper functionality
- Submerge the pump completely in the water to fill the pump body with water.
- The water temperature should not exceed 95°F (35°C) and **DO NOT** allow the pump freeze in the wintertime.
- The electrical connection should be made in a waterproof place and should be at least 6 feet (2 meters) away from your water feature. Ensure that the electrical cord loops below the electrical outlet to form a “**Drip Loop**”. This will prevent water from running down the cord into the electrical outlet.
- A minimum water level of approximately 6 inches is required to prevent the pump from taking in air. Do **not** let your pump run if it is not fully submerged, in freshwater only.
- The pump can be switched on by simply plugging it in and switched off by unplugging it. Make sure to submerge pump into water before connecting to a power supply. The pump may need to prime itself for a few seconds while it works the air out of your tubing and pump itself on initial startup. This is normal.
- A clogged or dirty intake screen will greatly reduce performance. If the pump is used on a dirty surface, raise it slightly to reduce the amount of debris contacting the intake. If less flow is desired, adjust the regulator on the side of the pump or restrict the discharge flow.
- A routine maintenance schedule is critical to proper operation of your pump and will give it a longer operational life. If you have any issues with your pump, refer to the troubleshooting section of this manual.
- If you have any questions about your **TADPOLE SERIES Submersible Water Pump**, please call us at **1-800-553-5605**. We're happy to help!



Troubleshooting

If your pump fails to start, or slows down significantly under load, regardless of water level, shut off and disconnect from power supply and check the following conditions:

Check that the supply voltage is correct and verify motor is turning in proper direction. Check plug, cord and switch for damage.

- Check to see if any dirt entered the output assembly. If so, follow the cleaning instructions below that are explained within the maintenance section.
- Check to see if any of your hoses or jets have become clogged. Clean them if necessary.
- Ensure the pump has sufficiently cooled down if overheating has occurred.



Attention: Repeating cycles of stopping and restarting will damage this pump. Do not continue operation at low water level or while the inlet is clogged with debris. It may cause noise, heavy vibration, and pump damage.

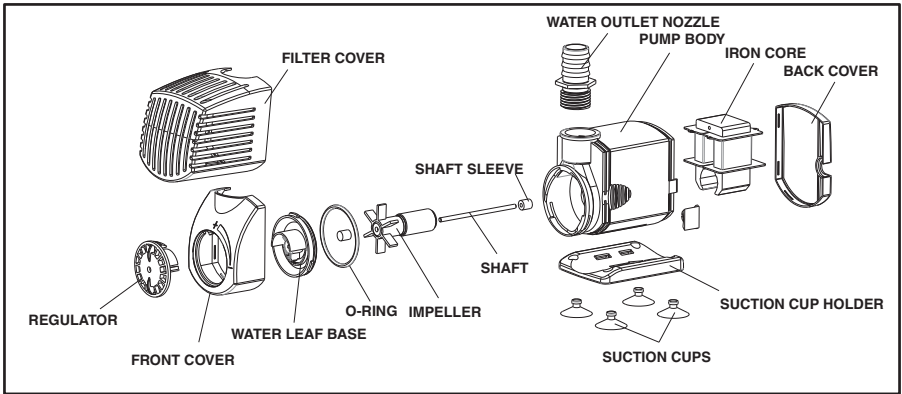
Maintenance

It is your responsibility to upkeep the maintenance on your **TP SERIES Submersible Water Pump**. You must conduct regular routine inspections and make necessary repairs to your pump in order to maintain proper operations

Always follow the safety instructions and make sure that the pump is disconnected from the power supply before attempting to perform maintenance on your pump.

Follow these instructions to give the pump a intensive cleaning.

- Always disconnect your pump from the power supply before handling your **TP SERIES Pump**.
- Remove the back cover and impeller. Do **not remove** the pumps shaft. Doing so **will result in warranty being voided**.
- Use a small brush and garden hose to remove any debris. Thoroughly rinse out your pump and flush your tubing.



Attention: Once a year, we recommend that you remove the pump from the water feature and soak it for up to **36 hours** in a solution of **CLR (Calcium Lime Rust)** and water, before pond winterization and storing your pump. Rinse thoroughly before reinstalling the pump in the water feature.

SEE OUR FULL SELECTION



Pond, Fountain, Lighting, and Pondless Kits at

anjonmfg.com

Everything you need for your water feature.

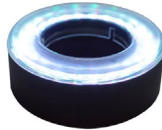
Choose from our standard kits, semi-custom or full custom projects.

Available for your TP SERIES Submersible Water Pump!



Ignite Pond and Landscape Lighting

The Ignite Pond Fountain Lighting Kit has 48 LEDs and is fully submersible. Add white or color changing Red/Blue/White light effects to your water feature. Available NOW through retailers and anjonmfg.com!



Everything you need to build, prepare & maintain your pond all year long.



Fountain Nozzle Kit

The FT Series Fountain Nozzle Kit can be added to your TP SERIES Fountain Pump. Includes 3 different spray pattern nozzles and is height adjustable. Easy to install. **Make the most out of your water feature!**

Available NOW through retailers and anjonmfg.com!

for TP Series Pump	FT Nozzle Kit
TP-350	FT03
TP-500 / TP-750	FT04
TP-950 / TP-1300	FT05

Seasonal Care & Maintenance



KOI & GOLDFISH FOOD

Select from growth, color enhancing, or cold weather formulations.



WATER TREATMENTS

Create healthy environments for your water garden or prized koi fish.



LIMITED WARRANTY

Products manufactured by Anjon Manufacturing are warranted to the original user only to be free of defects in material and workmanship for a period of

Models TP 90, TP 170, & TP 250:

12 months from the date of purchase, but not more than 18 months from the date of manufacture.

Models TP 350, TP 500, TP 750, TP 950, & TP 1300:

24 months from the date of purchase, but not more than 30 months from the date of manufacture.

ANJON MANUFACTURING liability under this warranty shall be limited to repairing or replacing, at ANJON MANUFACTURING's discretion, without charge, F.O.B. ANJON MANUFACTURING will not be liable for any cost of removal, installation, transportation, or any other charges which may arise in connection with a warranty claim.

To obtain service under this warranty, the defective product must be returned to the distributor or dealer of ANJON MANUFACTURING's products from which it was purchased together with proof of purchase and installation date, failure date, and supporting installation data. Unless otherwise provided, the distributor or dealer will contact ANJON MANUFACTURING or an authorized service station for instructions. Any defective product to be returned to ANJON MANUFACTURING or a service station must be sent freight prepaid: documentation supporting the warranty claim and/ or a Return Merchandise Authorization (RMA) must be included if so instructed. In the absence of suitable proof of purchase date, the effective date of this warranty will be based upon the date of manufacture.

Any replacement product may be either new or like-new, provided that it has functionality at least equal to that of the product being replaced. No requests for service under this warranty will be accepted if received more than 30 days after the term of the warranty. Correction of defects, in the manner and for the duration of the warranty described in this warranty, shall constitute complete fulfillment of all liabilities and responsibilities of ANJON MANUFACTURING to the user with respect to the product, and shall constitute full satisfaction of all claims, whether based on contract, negligence, and strict liability or otherwise. Except for the obligations specifically set forth in this warranty, in no event shall ANJON MANUFACTURING be liable for direct, indirect, special, incidental, or consequential damages, whether based on contract, tort, or any other legal theory and whether advised of the possibility of such damages.

ANJON MANUFACTURING reserves the right to change or improve its products or any portions thereof without being obligated to provide such a change or improvement for units sold and/or shipped prior to such a change or improvement.

THERE ARE NO EXPRESS OR IMPLIED WARRANTIES, INCLUDING MERCHANTABILITY OR FITNESS FOR A PARTICULAR PURPOSE, WHICH EXTEND BEYOND THOSE WARRANTIES DESCRIBED OR REFERRED TO ABOVE EXCEPT AS EXPRESSLY HEREIN PROVIDED THE GOODS ARE SOLD "AS IS", THE ENTIRE RISK AS TO QUALITY AND FITNESS FOR A PARTICULAR PURPOSE, AND PERFORMANCE OF THE GOODS IS WITH THE BUYER, AND SHOULD THE GOODS PROVE DEFECTIVE FOLLOWING THEIR PURCHASE, THE BUYER AND NOT THE MANUFACTURER, DISTRIBUTOR, OR RETAILER ASSUMES THE ENTIRE RISK OF ALL NECESSARY SERVICING AND REPAIR.

Some jurisdictions do not allow the exclusions or limitation of incidental or consequential damages and some jurisdictions do not allow limitations on how long implied warranties may last or require you to pay certain expenses as set forth above. Therefore, the above limitations or exclusions may not apply to you. This warranty gives you specific legal rights and you may also have other rights which vary from jurisdictions to jurisdiction.

Requests for review of a potential warranty claim can be submitted to returns@anjonmfg.com

You can also submit your request online at:
<https://anjonmfg.com/warranty/>



150 Anjon Way
O'Fallon, MO 63366
info@anjonmfg.com
1-800-553-5605
anjonmfg.com

